

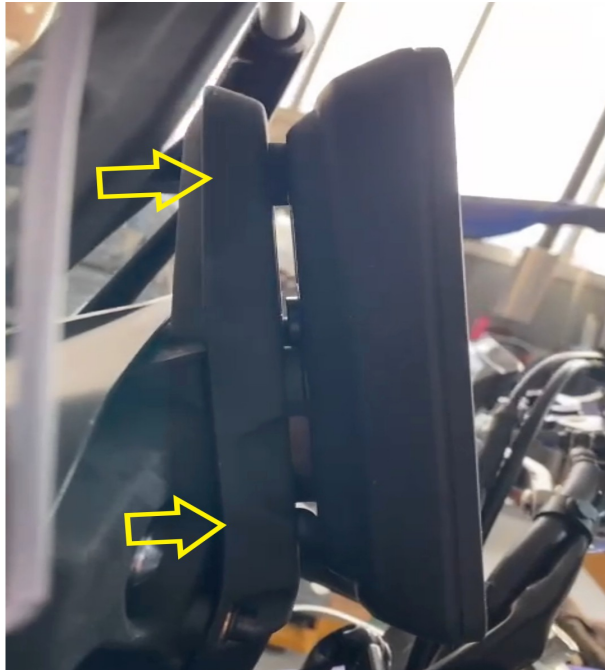


# **RALLY TOWER PRO/RACE YAMAHA T700**

## **ASSEMBLY INSTRUCTIONS**

**1 – DISASSEMBLE THE ORIGINAL FAIRING, THE SIDE FAIRINGS AND THE DEFLECTORS ON THE SIDES OF THE LIGHTHOUSE AND THE ORIGINAL NAVIGATOR SUPPORT.**

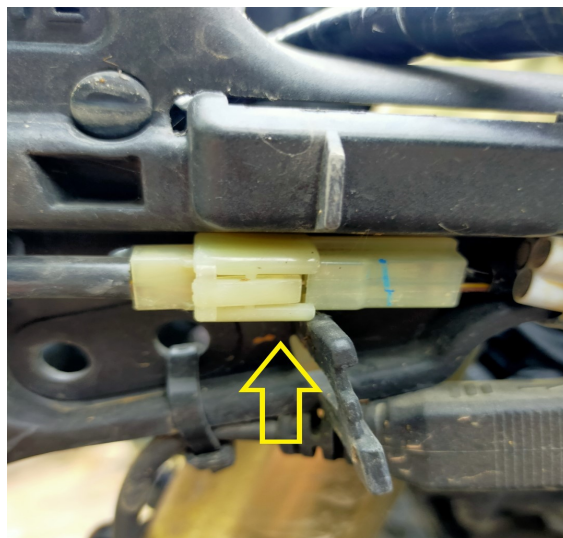
**2 – REMOVE THE 2 SCREWS BEHIND THE ODOMETER AND PULL THE TFT**



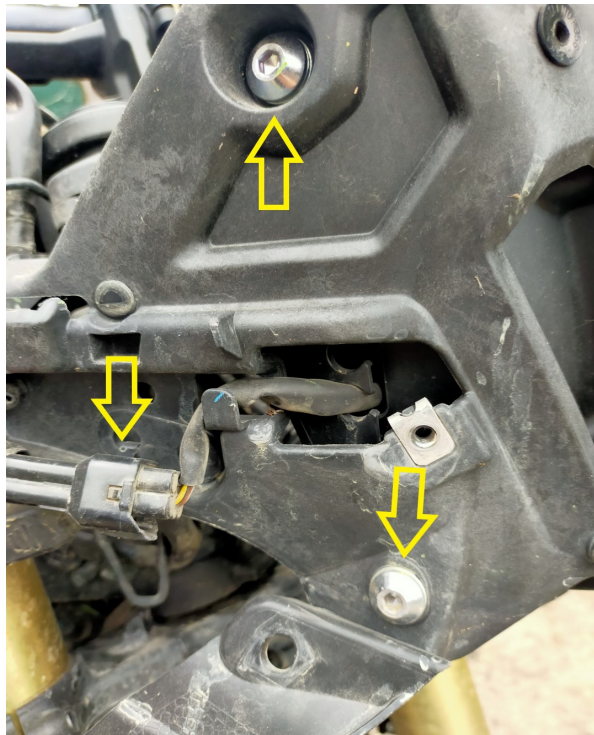
**3 – DISCONNECT THE ODOMETER CONNECTOR AND UNSCREW THE 3 SCREWS OF THE TFT**

**4 - DISASSEMBLE THE TEMPERATURE PROBE FROM THE TFT**

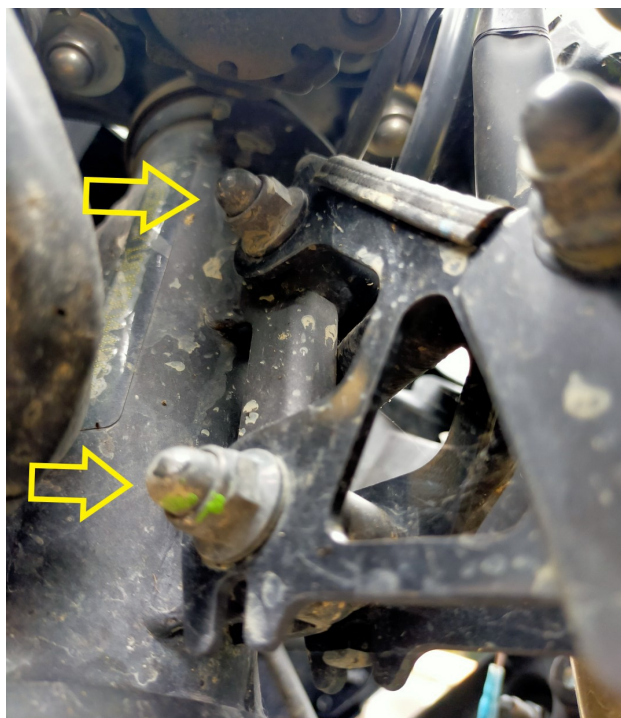
**5 – DISCONNECT THE CONNECTOR ON THE LEFT SIDE OF THE 12V SERVICE SOCKET**



**6 – DISCONNECT THE CONNECTOR ON THE RIGHT SIDE OF THE HEADLIGHTSCRESCREW  
UNSCREW THE HEADLIGHT SCREWS ON BOTH SIDES**



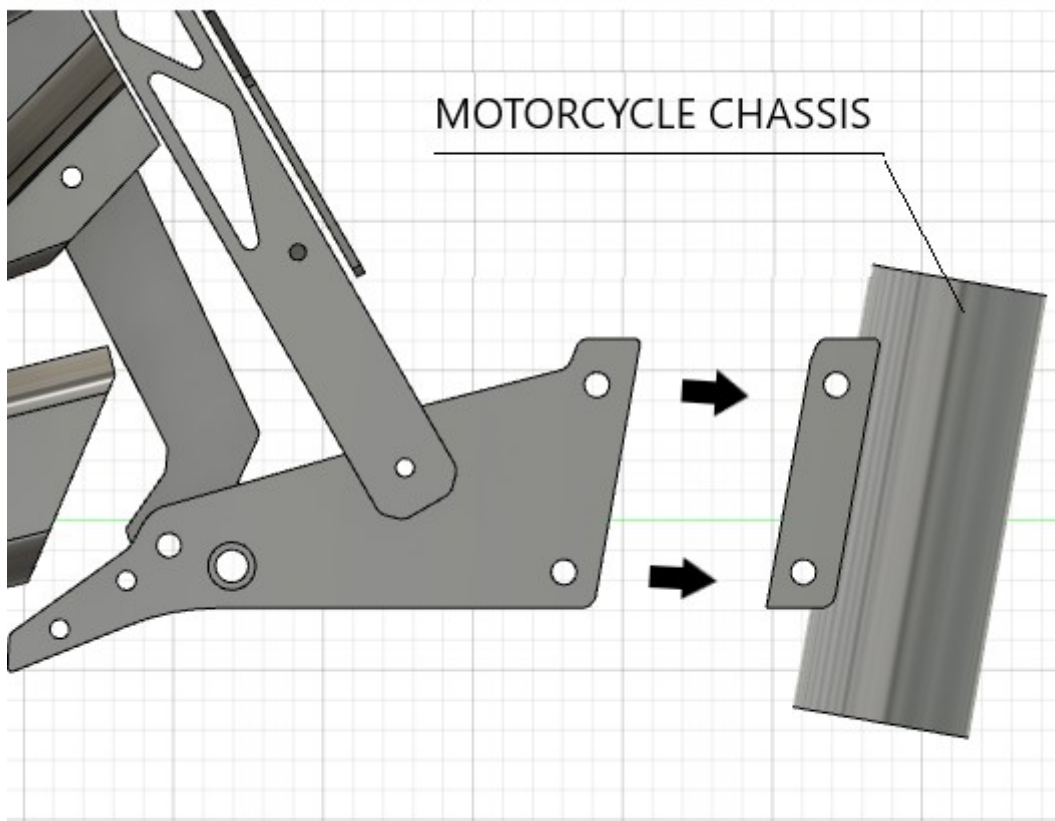
**7 – UNSCREW THE SCREWS ON THE STEERING TUBE AND REMOVE THE HEADLIGHT  
UPWARDS**



## 8 – UNSCREW THE INSTRUMENT MOUNT BOLTS FROM RALLY TOWER



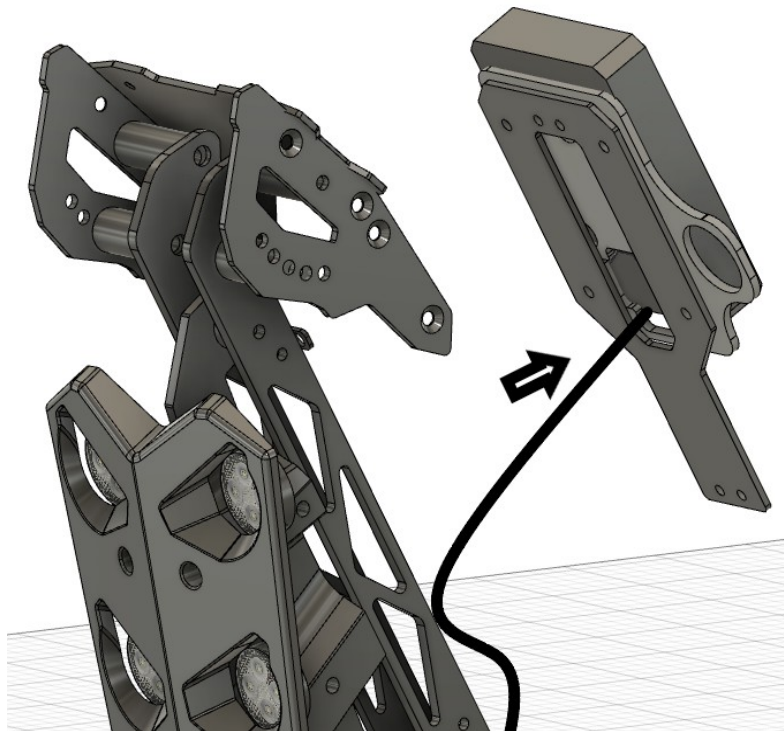
## 9 – MOUNT THE RALLY TOWER TO THE STEERING TUBE



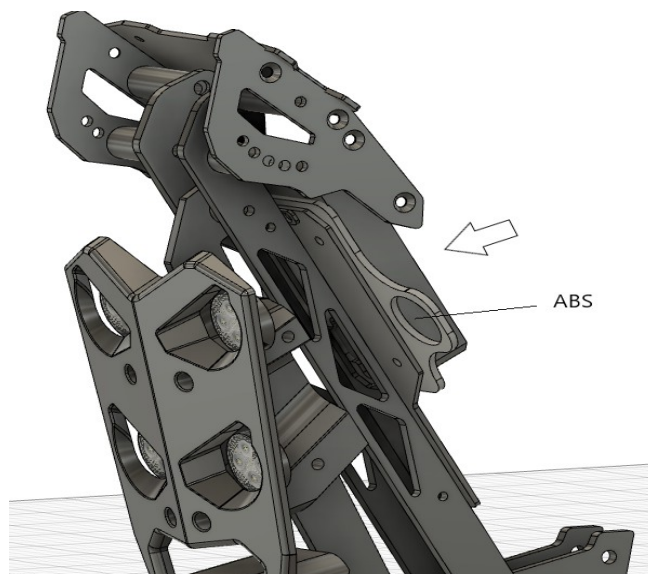
## **9 – DISASSEMBLE THE TFT PLATE**

**10 - ATTACH THE ORIGINAL RUBBER SILENT BLOCKS TO THE PLATE AND MOUNT THE TFT.**

**11 – MOUNT THE TFT TO THE PLATE AND ATTACH THE CABLE TIES AND TEMPERATURE SENSOR TO THE RALLY TOWER FRAME.**



**12 – MOUNT THE TFT PLATE TO THE RALLY TOWER CHASSIS AND FIXED THE ABS.**



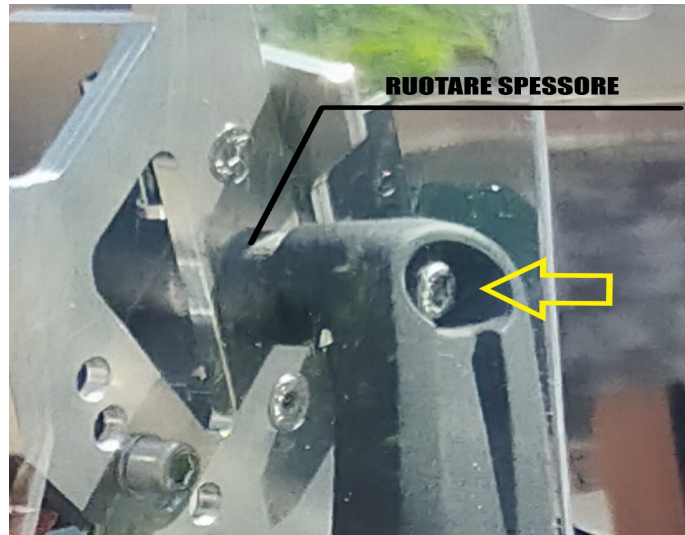


**13 – CONNECT THE LIGHT CONNECTOR ON THE RIGHT AND THE USB SOCKET CONNECTOR ON THE LEFT TO THE ORIGINAL WIRING HARNESSES OF THE MOTORCYCLE.**

**14 – ATTACH THE SUPPORTS TO THE RALLY TOWER BY PASSING THROUGH THE ORIGINAL PLASTIC FRAME BUSHING AND TIGHTEN THE NUTS**

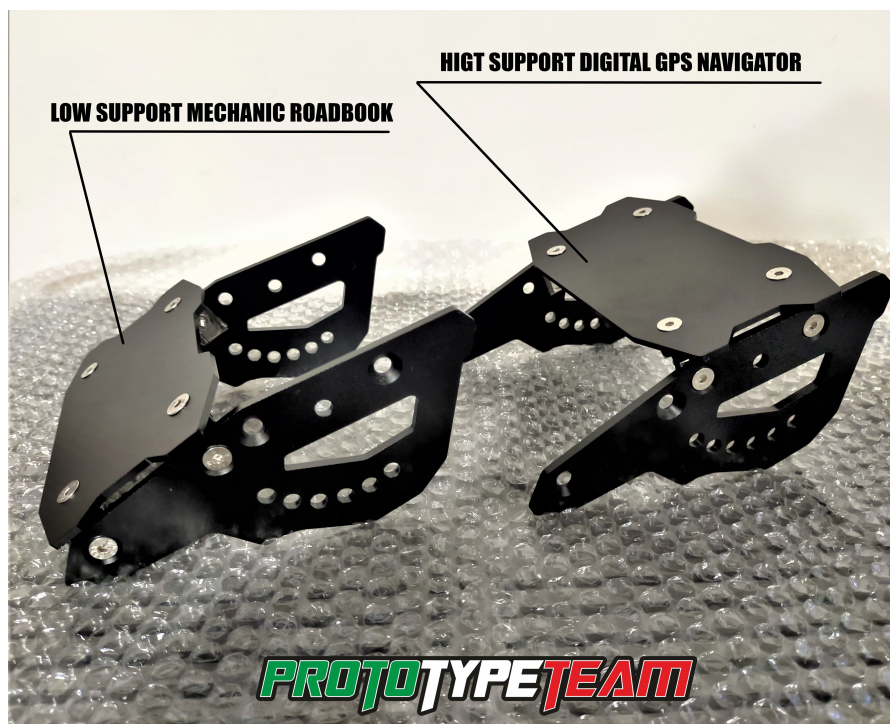


**15 – MOUNT THE RALLY TOWER WITH THE BOLTS AND RUBBER SHIM TO THE ORIGINAL PLASTIC FRAME OF THE BIKE.**

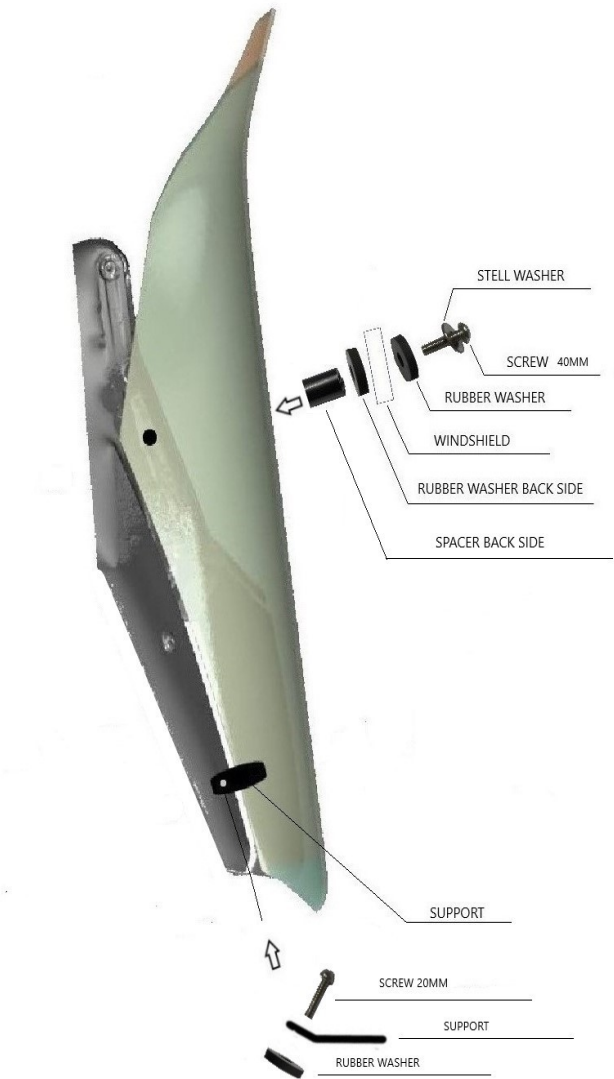


**16 – MOUNT THE FAIRINGS ON THE SIDES AND THE DEFLECTORS**

**17 - MOVE THE NAVIGATION INSTRUMENT PLATE TO YOUR LIKING**



**18 – MOUNT THE RALLY WINDSHIELD**



**EMAIL TECHNICAL SUPPORT : [PROTOTYPE-TEAM@HOTMAIL.COM](mailto:PROTOTYPE-TEAM@HOTMAIL.COM)**

